

All The Things You Are

J.Kern

arr. Jürgen Hagenlocher

Intro

C7#9

Musical notation for the Intro section, measures 1-4. The key signature is three flats (B-flat major/C minor). The time signature is common time (C). The notation is in a grand staff (treble and bass clefs). Measure 1 starts with a C7#9 chord. Measure 2 continues with the same chord. Measure 3 features a Gb7 chord. Measure 4 features a Db7 chord.

Musical notation for the first staff, measures 5-8. Measure 5 starts with a C7#9 chord. Measure 6 continues with the same chord. Measure 7 features a Bb7#9 chord. Measure 8 features a Db7 chord. A first ending bracket spans measures 7 and 8.

Musical notation for the second staff, measures 9-11. Measure 9 starts with a F7#9 chord. Measure 10 features an Eb7#5 chord. Measure 11 features a Db7#5 chord. A second ending bracket spans measures 10 and 11.

Musical notation for the third staff, measures 12-15. Measure 12 features an Fm7 chord. Measure 13 features an Fm7 chord. Measure 14 features an Fm7 chord. Measure 15 features an Fm7 chord.

Musical notation for the fourth staff, measures 16-19. Measure 16 features an Fm7 chord. Measure 17 features an Fm7 chord. Measure 18 features a Cmaj7 chord and an Fmaj7 chord. Measure 19 features an Ab7 chord and a Dbmaj7 chord.

20

Cm7 Cm7 Cm7 Cm7

24

Cm7 Cm7 Gmaj7 Cmaj7 Eb7 Abmaj7

28

Gmaj7 Bb7 Ebmaj7 Gb7 Bmaj7 D7 Gmaj7

32

Emaj7 G7 Cmaj7 Eb7 Abmaj7 B7 Emaj7 C7#9

36

Fm7 Fm7 Fm7 Fm7

40

Fm7 Gbmaj7#11 Emaj7#11 Amaj7#11 Ebm7 Emaj7#11 Dmaj7#11 Cmaj7#11

44

Bbm7 Dbm7 Gb7

Interlude

46

C7#9

C7#9 Gb7 Db7

50

1.

C7#9 Bb7#9 Db7

54

2.

F7#9 Eb7#5 Db7#5 C7#9

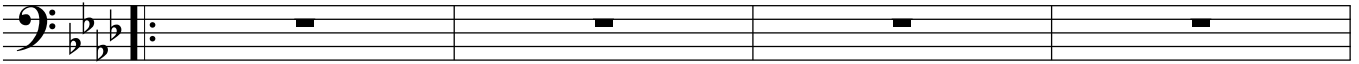
Solochanges

Fm7

Fm7

Fm7

Fm7



Fm7

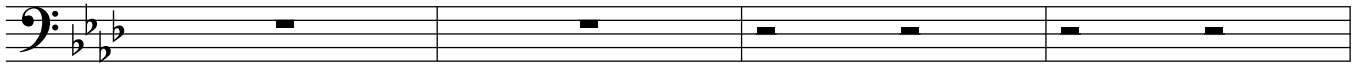
Fm7

Cmaj7

Fmaj7

A \flat 7

D \flat maj7

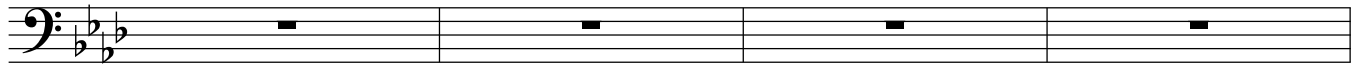


Cm7

Cm7

Cm7

Cm7



Cm7

Cm7

Gmaj7

Cmaj7

E \flat 7

A \flat maj7



Gmaj7

B \flat 7

E \flat maj7

G \flat 7

Bmaj7

D7

Gmaj7



E \flat maj7

G7

Cmaj7

E \flat 7

A \flat maj7

B7

E \flat maj7

C7 \sharp 9

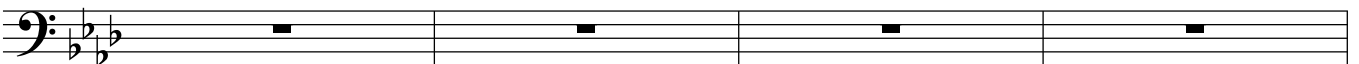


Fm7

Fm7

Fm7

Fm7



Fm7

G \flat maj7 \sharp 11

E \flat maj7 \sharp 11

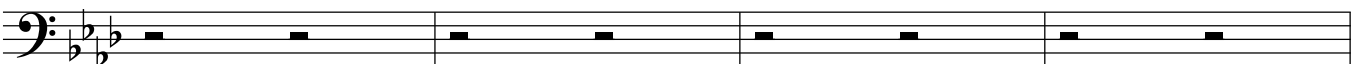
A \flat maj7 \sharp 11

E \flat m7

E \flat maj7 \sharp 11

D \flat maj7 \sharp 11

C \flat maj7 \sharp 11



B \flat m7

D \flat m7

G \flat 7

A \flat maj7

B7

E \flat maj7

C7 \sharp 9

